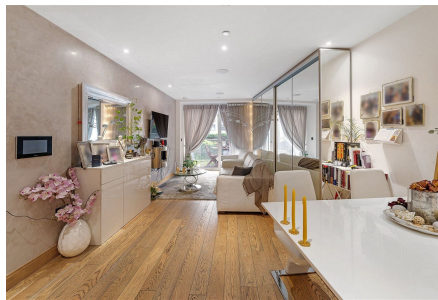


Your Logo

Apartment 15, 70, Horseferry Road

£950,000

🛏 1 🚿 1 🚗 1



Please Quote CV0910 For All Enquiries

Welcome to The Courthouse, a luxurious residence epitomising modern elegance and urban convenience in the heart of London's prestigious SW1 postcode. This exceptional one bedroom apartment offers an unparalleled living experience, boasting lavish interiors, premium amenities, and a prime location amidst the vibrant neighbourhood of SW1.

With excellent transportation links nearby, commuting is effortless for residents of The Courthouse. London Victoria and St James tube stations are within walking distance, offering convenience to all parts of London.

Your Logo

Whether as a primary residence or an investment opportunity, The Courthouse represents a secure investment in one of London's most coveted locations. With its prime address, luxurious amenities, and timeless design, this apartment offers a rare chance to experience the epitome of urban living in the heart of the city.

Your Logo

Key Features

-
-
-
-
-
-
-
-

Horseferry Road

Approximate Gross Internal Area = 60 sq m / 646 sq ft

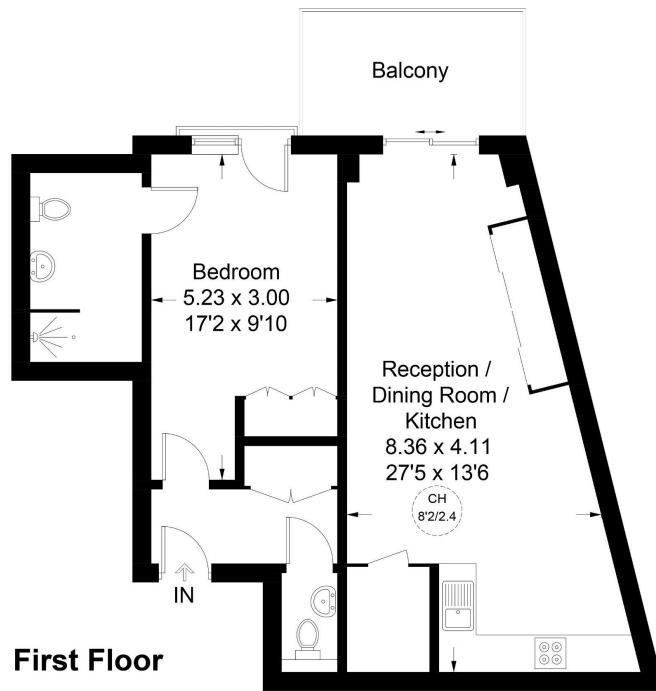


Illustration for identification purposes only, not for valuation purposes, measurements are approximate, not to scale. floorplansUsketch.com © (ID1083804)